

Vegetation Management with the THINVERT® ULV System

Ultra low volume
Accuracy
Drift control

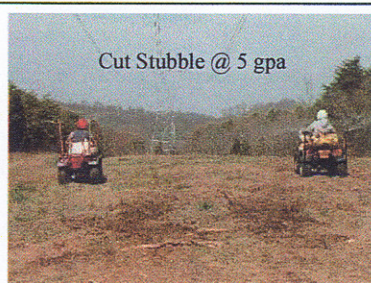


Foliage spraying

Accord®/ Arsenal®
Krenite®/Arsenal
Garlon®/Tordon®

Cut Stubble Application

Tordon K®
Tordon K/Arsenal

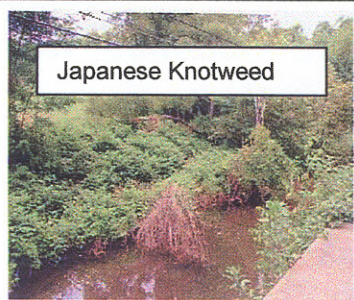


Chemical Side-trimming

Krenite®/THINVERT®

Roadside Brush Control

Krenite/Arsenal
Accord/Arsenal
Garlon/Arsenal



Invasive weed control

Japanese Knotweed
Phragmites
Ailanthus
Japanese stiltgrass
Mile-a-minute vine

For information on these uses of the THINVERT® ULV System, contact Waldrum Specialties, Inc.
Phone 215 348-5535, FAX 215 348-5541, e-mail: info@waldrumspecialties.com,

Precision vegetation management With the THINVERT® ULV System

The **THINVERT® ULV System** combines a unique, patented series of spray nozzles with a patented thin invert emulsion spray fluid. This ULV System controls spray drift, and gives accurate, uniform vegetation coverage at a low spray volume of 4 to 5 gal/A using ground application equipment, while minimizing the evaporation and droplet shrinkage of airborne spray particles.

THINVERT spray nozzles produce small, uniform spray droplets that give excellent coverage of foliage and/or stems of grasses, broadleaf weeds, and woody plants at ultra low spray volumes. These low spray volumes enable the applicator to use smaller vehicles, spray tanks, and pumps or to cover more area with conventional spray equipment. **THINVERT's** ultra low spray volume and small, uniform droplets keep brush control sprays on plant foliage, minimizing injury to ground cover plants and turf, even when using non-selective sprays.

THINVERT® RTU is a ready-mixed spray fluid that can be mixed with most herbicides and plant growth regulators, and with many other pesticides for turf, landscape, and invasive weed control uses. **THINVERT® Concentrate** can be field-mixed with water and herbicides of choice, and applied with hand-carried or vehicle-mounted spray equipment for railroad, roadside, and utility vegetation management.

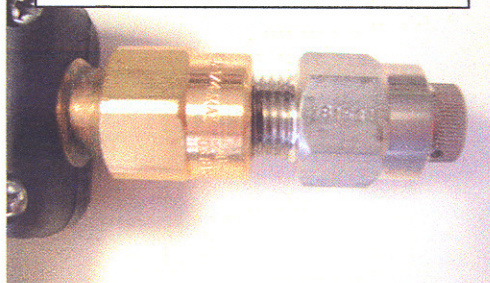
THINVERT droplets appear white on plant foliage, so spray coverage is readily visible, even at these low spray volumes.

THINVERT sprays have proven to be remarkably rainfast, even with problem water-borne herbicides.

THINVERT® Widecast™ Nozzle



THINVERT® Backpack Nozzle



THINVERT sprays may be applied with:

- Backpack sprayers
- All-terrain vehicles
- Truck-mounted sprayers
- Hy-rail track vehicles
- RADIARC® Sprayers
- Hand-held spray wands or guns
- THINVERT® Side-Trim™ Bucket
- Helicopters or fixed-wing aircraft

THINVERT® nozzles:

#71510 applies a 6" swath for edging and weeding of ornamental beds or selective control of invasive exotic weeds

#81531 applies a 3' swath for brush control

#73019 applies a 6' swath for turf and other broadcast sprays

#15105 applies a 1' swath at a distance of 15 feet for tall brush or "thin-line" basal sprays

THINVERT® Widecast™ nozzles:

#754 applies a 20' swath for turf work at 3-5 mph

#1534 applies a 20' swath at 4-8 mph, or a 30' swath with dual nozzles mounted on an ATV

#1554 is designed for use with the **THINVERT® Side-Trim™ Bucket** for side-trimming power lines with **Krenite®S**

WSI

Waldrum Specialties, Inc.

4050A Skyron Drive

Doylestown, PA 18901

215 348-5535 FAX 215 348-5541

e-mail: info@waldrumspecialties.com

website: www.waldrumspecialties.com