



Cooperative Invasive Species Management Areas: Resources and Support

Janet Clark

Center for Invasive Plant Management, Bozeman, MT

Partnerships



Partnerships: Challenges and Benefits

Partnerships require:

- ⦿ Time
- ⦿ Compromise
- ⦿ Workers as well as bosses and “idea people”
- ⦿ Someone to be accountable



2003 / 1 / 6

Partnerships: Challenges and Benefits



Partnerships offer:

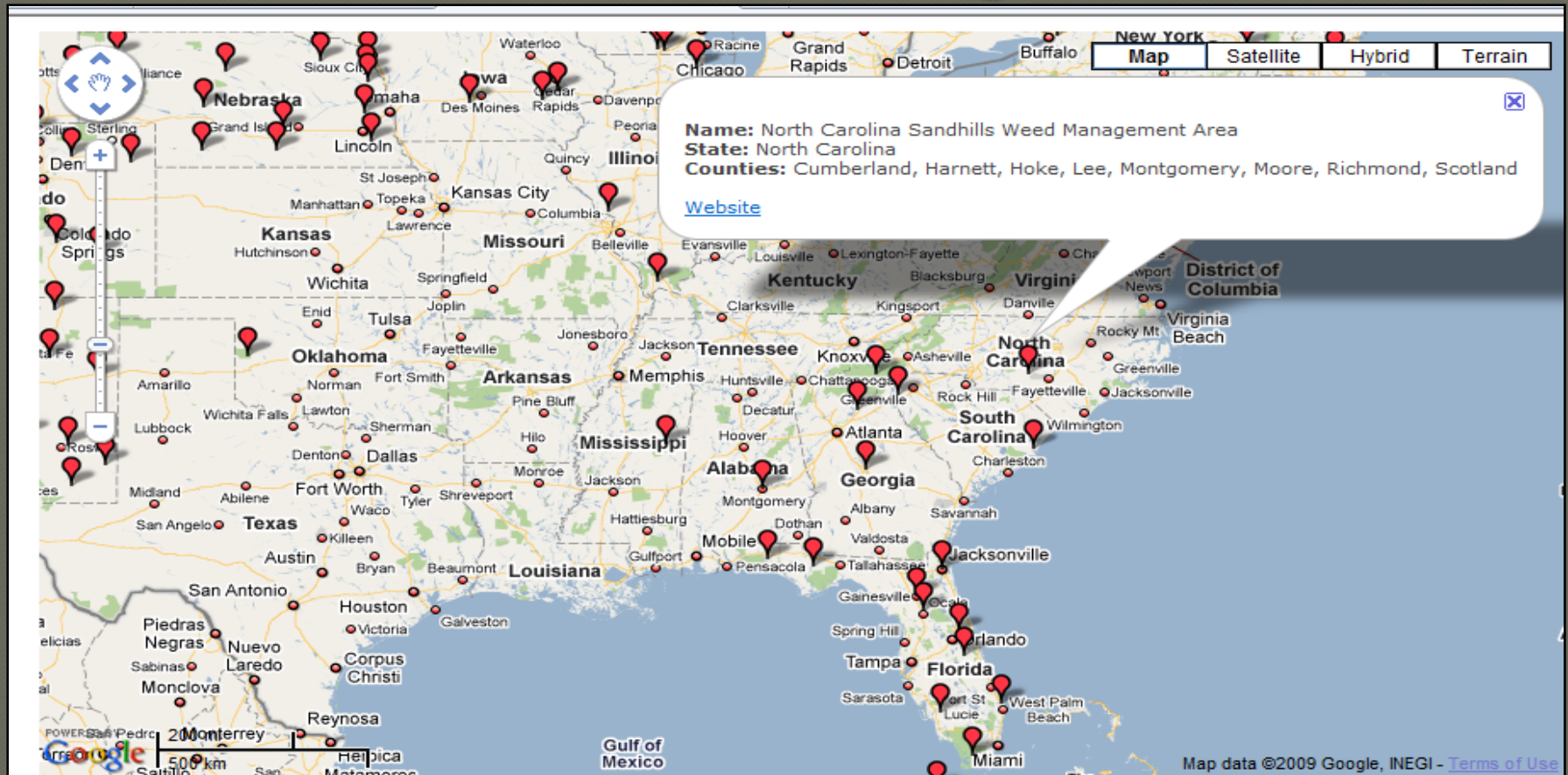
- Wide range of skills and abilities
- More resources (funding, equipment, time)
- Increased project credibility and visibility
- Better ideas – “*two heads are better than one*”

Cooperative Weed/Invasive Species Management Areas



www.nnipc.org

Cooperative Weed/Invasive Species Management Areas



www.nnipc.org

What is a CWMA/CISMA?

*A partnership of federal, state, and local government agencies, tribes, individuals, and various interested groups that manage noxious weeds or invasive plants in a defined area.**

* Endorsed by the
Western Weed
Coordinating
Committee, 2006



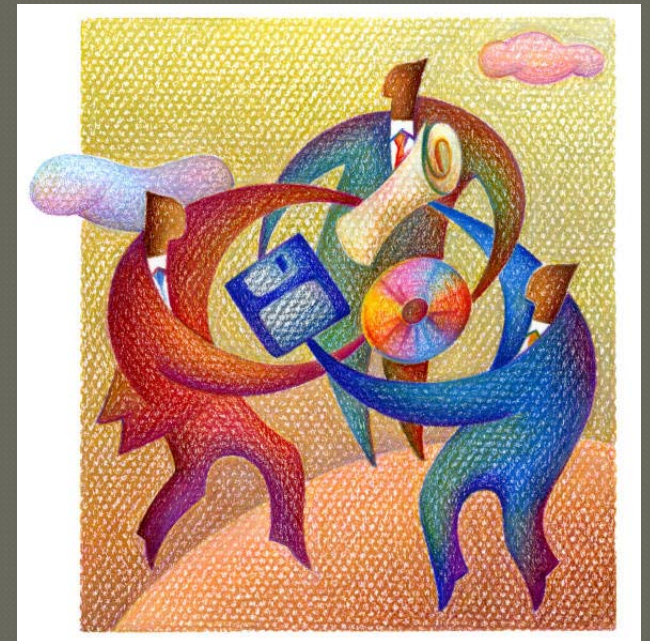
Characteristics of a CWMA/CISMA



1. Defined geographical area
2. Representation of the majority of landowners
3. Steering committee
4. Commitment to cooperation
5. Comprehensive plan

What do they do?

- ◉ **Collaborate, share responsibilities and resources**
- ◉ **Develop a management plan**
 - **Objectives** – What is the goal?
 - **Inventory** – What is the status today?
 - **Management** – What are the priorities? Options?
 - Prevention/EDRR
 - Control
 - Restoration
 - **Education & Outreach** – Who needs to be on board?
 - **Logistics** – authority, finances, communications, reporting
- ◉ **Coordinate action**
- ◉ **Evaluate and adapt**



Diversity



- **Geographical variation**
- **Infrastructure for IS management**
- **State laws**
- **State management plans, IS Councils**
- **Population**
- **Culture**
- **Politics**

Who's involved?

1. Private landowners,
volunteers, youth

2. Federal agencies:

Fish & Wildlife Service
Army Corps of Engineers
Dept. of Defense
National Park Service
USDA-NRCS

3. State agencies:

Fish & Wildlife
Natural Resources
Agriculture
Transportation

4. Non-governmental
organizations:

The Nature Conservancy
Livestock interests
Exotic Pest Plant Councils

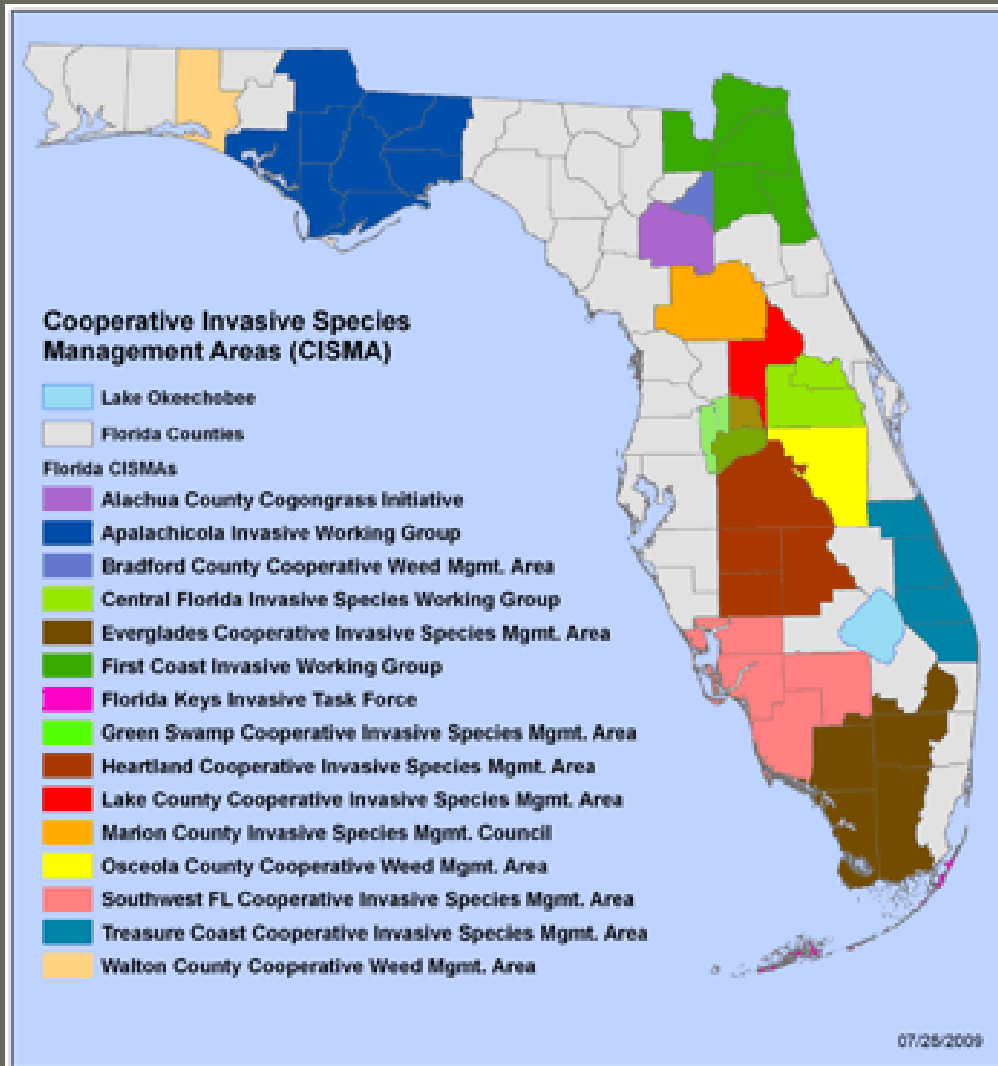
5. Counties

6. Universities

7. Anyone who's interested!



CISMAs in Florida

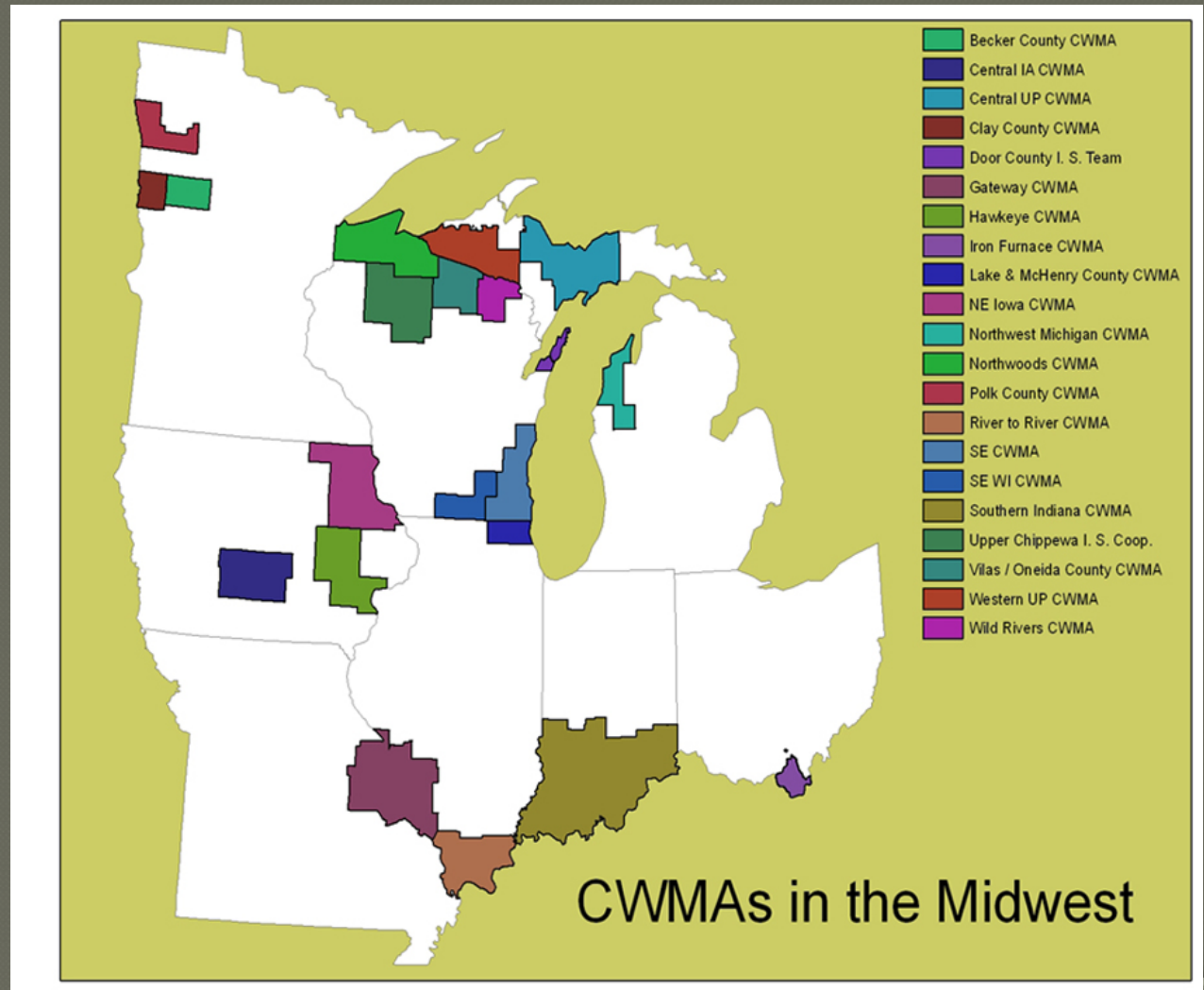


Florida Invasive
Species
Partnership

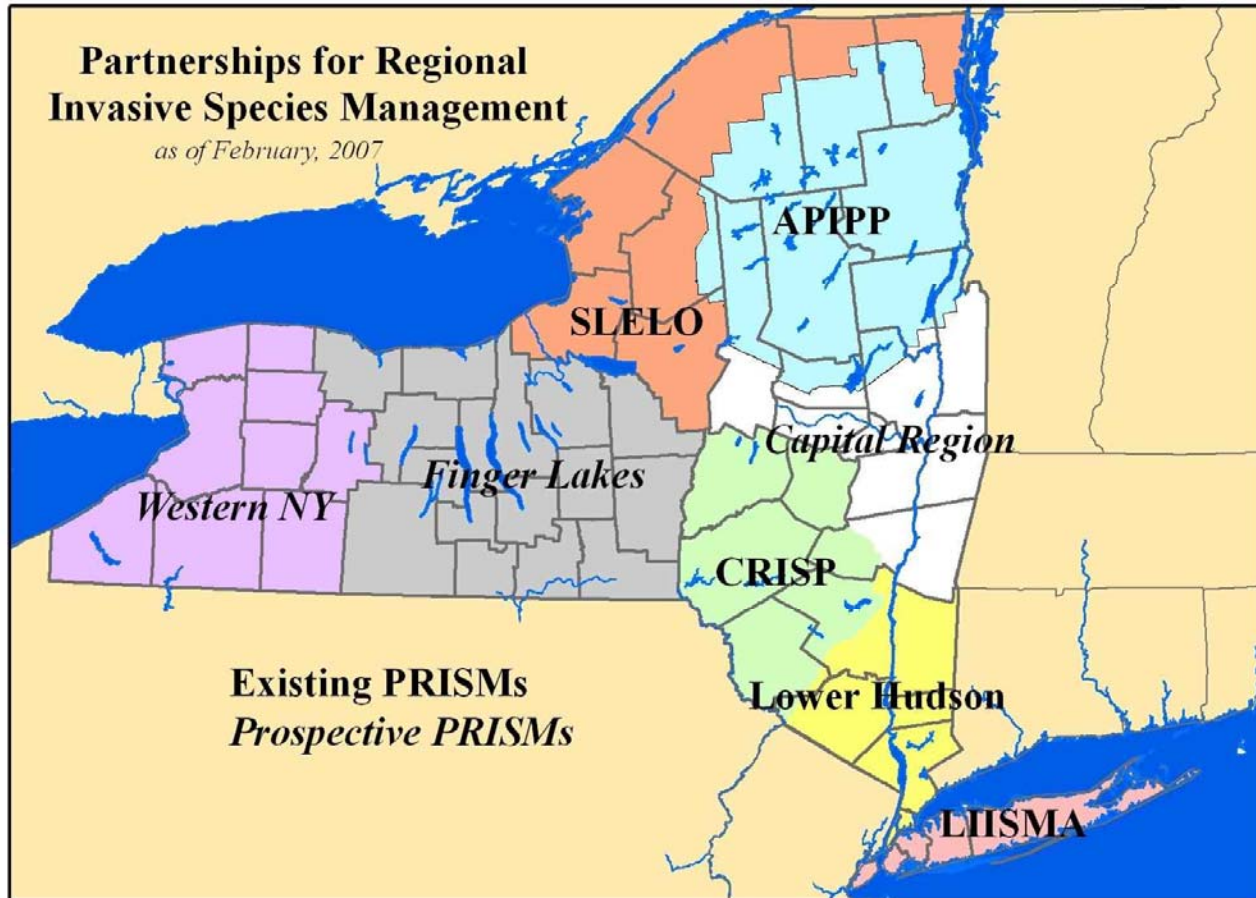
www.floridainvasives.org

CWMAs in the Midwest

Midwest
Invasive Plant
Network
www.mipn.org



PRISMs in New York



NY Dept. of Environmental Conservation

WMAs in California

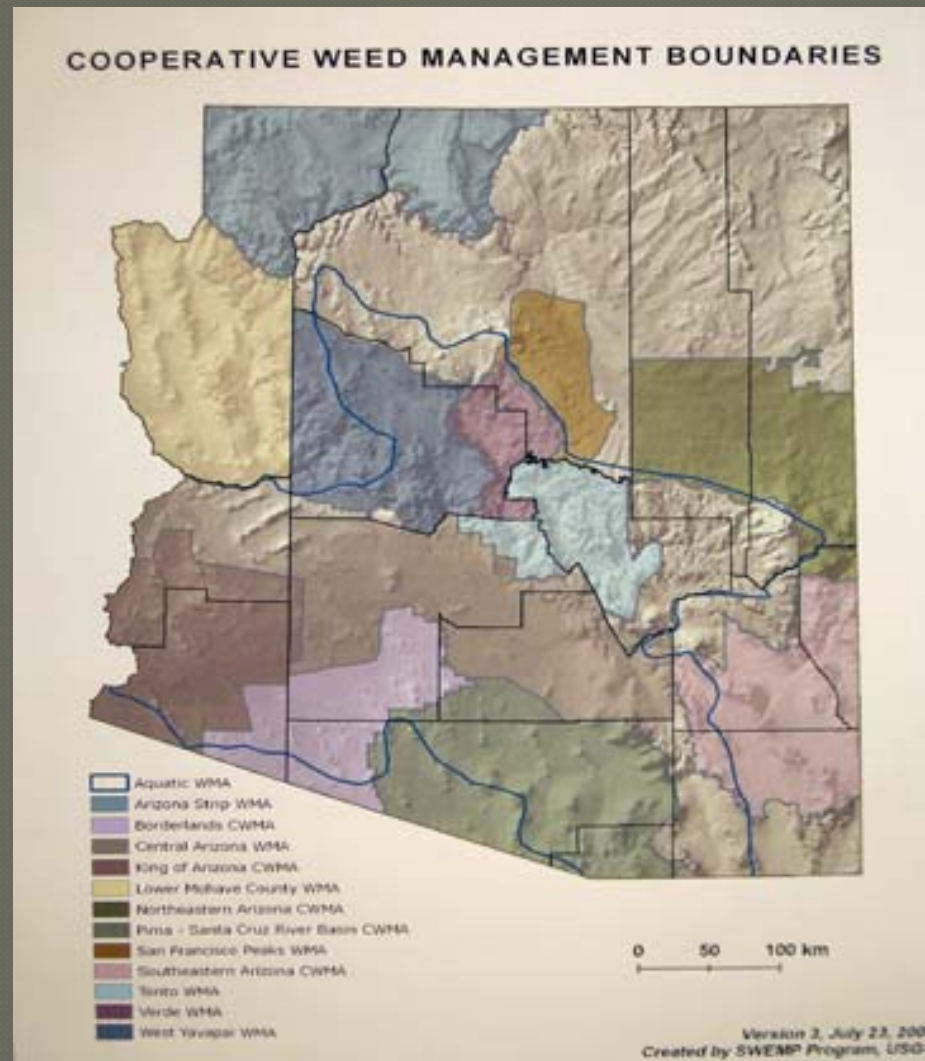


California
Invasive Plant
Council

www.cal-ipc.org

CWMAs in Arizona

Southwest
Vegetation
Management
Association
www.swvma.org



Weed Prevention Areas in Montana



**ONE LITTLE WEED
IS ONE BIG
PROBLEM**

WEEDS ARE RAPIDLY SPREADING into healthy rangelands. They're the single greatest threat to rangeland stability and continued cattle production. Programs are in place to stop the spread and protect producer profits from the cost and permanent impact of weeds.

WEED PREVENTION AREAS
PROTECTING MONTANA FROM INVASIVE WEEDS

For more information contact your local county Extension agent, weed coordinator, or Kim at kgoodwin@montana.edu

MONTANA
State Extension Service

**CENTER FOR
INVASIVE PLANT
MANAGEMENT**

NRCS
National Resources
Conservation Service

**ZERO TOLERANCE
SPOTTED
KNAPWEED**

- Pride of place
- Newspaper ads
- “Weed-Free Rangelands and Wildlife Habitat” brochures for hunters
- Weed-free hay
- Summer range riders
- GPS units for ranchers



WEED PREVENTION AREAS
PROTECTING MONTANA FROM INVASIVE WEEDS

Exotic Pest Plant Councils (EPPCs)

Alabama
 Florida
 Georgia
 Kentucky
 Mississippi
 North Carolina
 South Carolina
 Tennessee

SE-EPPC
 Southeast Exotic Pest Plant Council

[Home](#) | [About](#) | [Contact](#) | [Search](#) | [Links](#)

JOIN NOW | **PUBLICATIONS** | **INVASIVE PLANTS** | **ANNUAL MEETING** | **BOARD OF DIRECTORS** | **NEWS** | **EDDMAPS**

STATE CHAPTERS

- Alabama
- Florida
- Georgia
- Kentucky
- Mississippi
- North Carolina
- South Carolina
- Tennessee

RELATED ORGANIZATIONS

- National Association of

Southeast Exotic Pest Plant Council

The mission of the Southeast Exotic Pest Plant Council is to support the management of invasive exotic plants in natural areas of the Southeast U.S. by providing a forum for the exchange of scientific, educational and technical information. The Southeast Exotic Pest Plant Council is a non-profit organization and is not a regulatory agency.

Wildland Weeds

- » [Fall 2009](#)
- » [Summer 2009](#)
- » [Spring 2009](#)
- » [Winter 2008](#)

E-Newsletter

- » [December 2008](#)
- » [Sept. 2008](#)
- » [June 2008](#)
- » [February 2008](#)
- » [November 2007](#)

Resources

- » [SE-EPPC ListServ](#)
- » [Wildland Weeds](#)
- » [2005-2010 Platform](#)
- » [Advertise in Wildland Weeds](#)

EDD MapS
 Early Detection & Distribution Mapping System

- [View Distribution](#)
- [Report Infestations](#)
- [Presentations](#)
- [Documentation](#)

UPCOMING MEETINGS

- [GA-EPPC Annual Meeting](#)
 Athens, GA
 November 5, 2009
- [2009 Texas Invasive Plant](#)

<http://www.se-eppc.org/>

Center for Invasive Species & Ecosystem Health

Center for Invasive Species and Ecosystem Health
BUGWOOD NETWORK

Search:

The University of Georgia
Warnell School of Forestry and Natural Resources
College of Agricultural and Environmental Sciences

All Publications
All Image Archives

Topics:

- Agriculture
- Bark Beetles
- Bugwood Wiki
- Christmas Trees
- Cogongrass
- EDDMapS
- EPPC
- Forest A Syst
- Forest Pests
- Forest Plants
- Forest Productivity
- Forestry
- Fungi
- Hemlock Woolly Adelgid
- Information Technology

IPM IMAGES

Forestry Images
Invasive.org
Insect Images
Forest Pests
Bark Beetles

What's New

- Invasive species cause \$1.4 trillion of losses a year!
- 15,000 reasons to worry about invasive species
- NECIS Joint Statement on H.R. 2811
- Invasion of the Exotic Wildlife! Video
- New Pest - Megacopta cribraria (Bean plataspid) found on kudzu in Georgia
- Smithsonian magazine article about Asian Longhorned Beetle

LEARN MORE ABOUT THE
CENTER FOR INVASIVE SPECIES
AND
ECOSYSTEM HEALTH

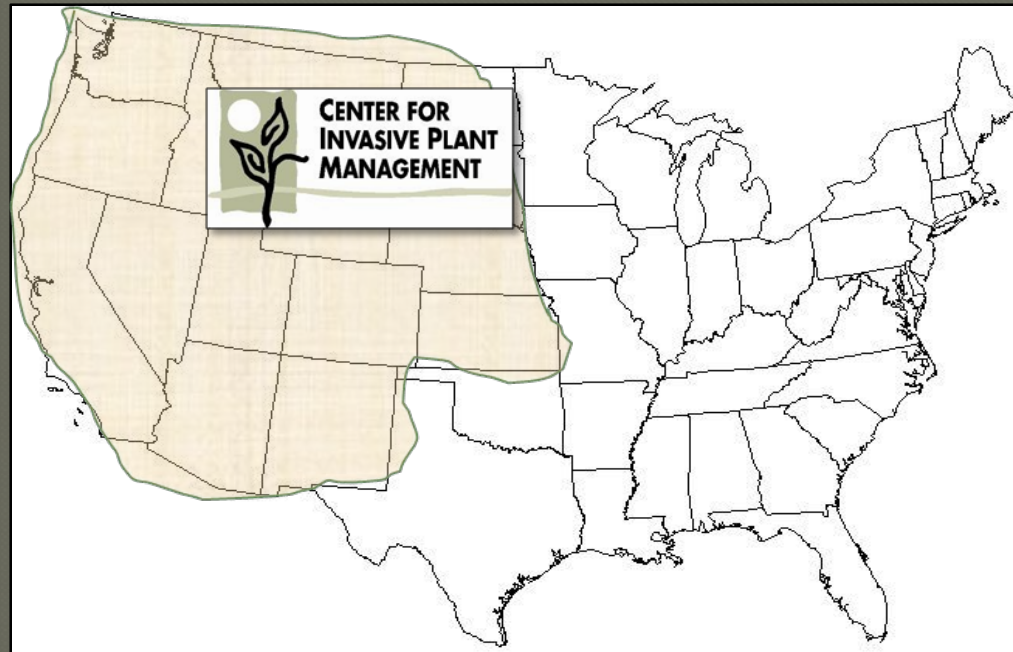
INFORMATION
FOR
GEORGIA

Why?

- Huge photo gallery
- Mapping resources (EDDMapS)
- Website development
- www.bugwood.org

Center for Invasive Plant Management

western regional clearinghouse



Why?

- www.weedcenter.org
- Resources for CWMAAs
- List of funding opportunities

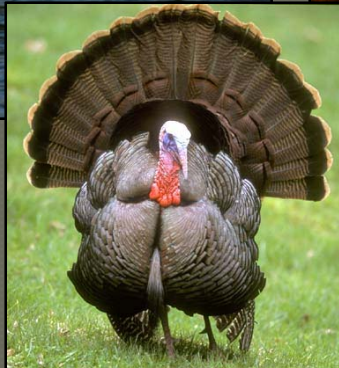
State universities



Why?

- Extension specialists, educational material
- Research projects
- Collaborations

Non-governmental organizations



Why?

- State wildlife management plans
- Passion and commitment
- Different approaches to resource mgmt

Aquatic Nuisance Species Task Force

Gulf and South Atlantic Regional Panel

Mid-Atlantic Regional Panel



Why?

- Regional planning and partnerships
- Education & outreach resources
- www.anstaskforce.gov

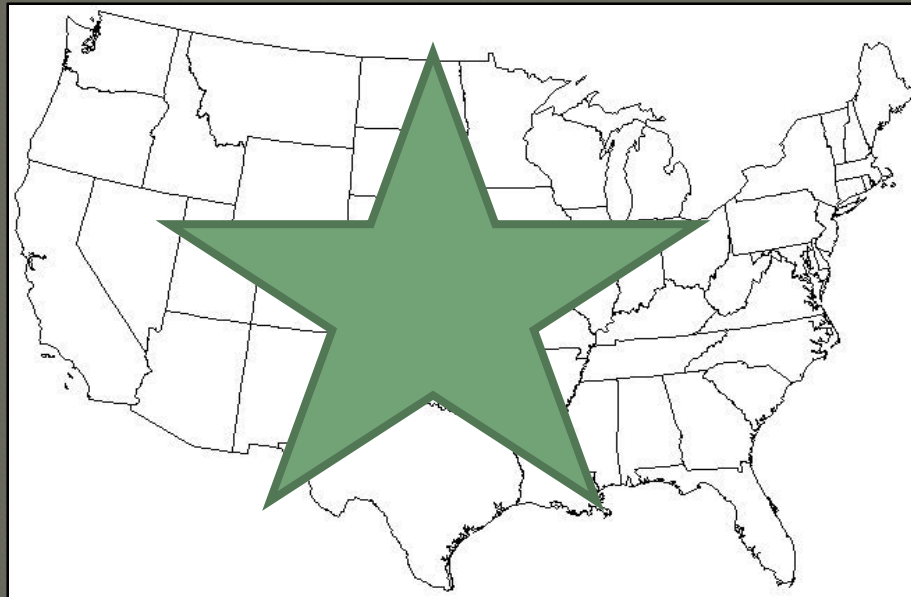
Federal Interagency Committee for the Management of Noxious and Exotic Weeds



Why?

- Dept. of Defense represented
- Multi-agency information exchange and problem-solving at monthly meetings

National Invasive Species Council



Why?

- Coordinates **Federal** response through the National IS Management Plan
- www.invasivespecies.gov

National Invasive Species Awareness Week



- Jan. 10-14, 2010, in Washington, DC
 - Invasives and climate change
 - Invasives and energy & biofuels
 - Invasives and the “green” economy
- www.nisaw.org



**CENTER FOR
INVASIVE PLANT
MANAGEMENT**



www.weedcenter.org

janet.clark@montana.edu