

Lubber Run Park, Arlington, VA

Potential Designated Weed Free Zone

DOD Weed Team #4



Mark Floyd

Jeff Herod

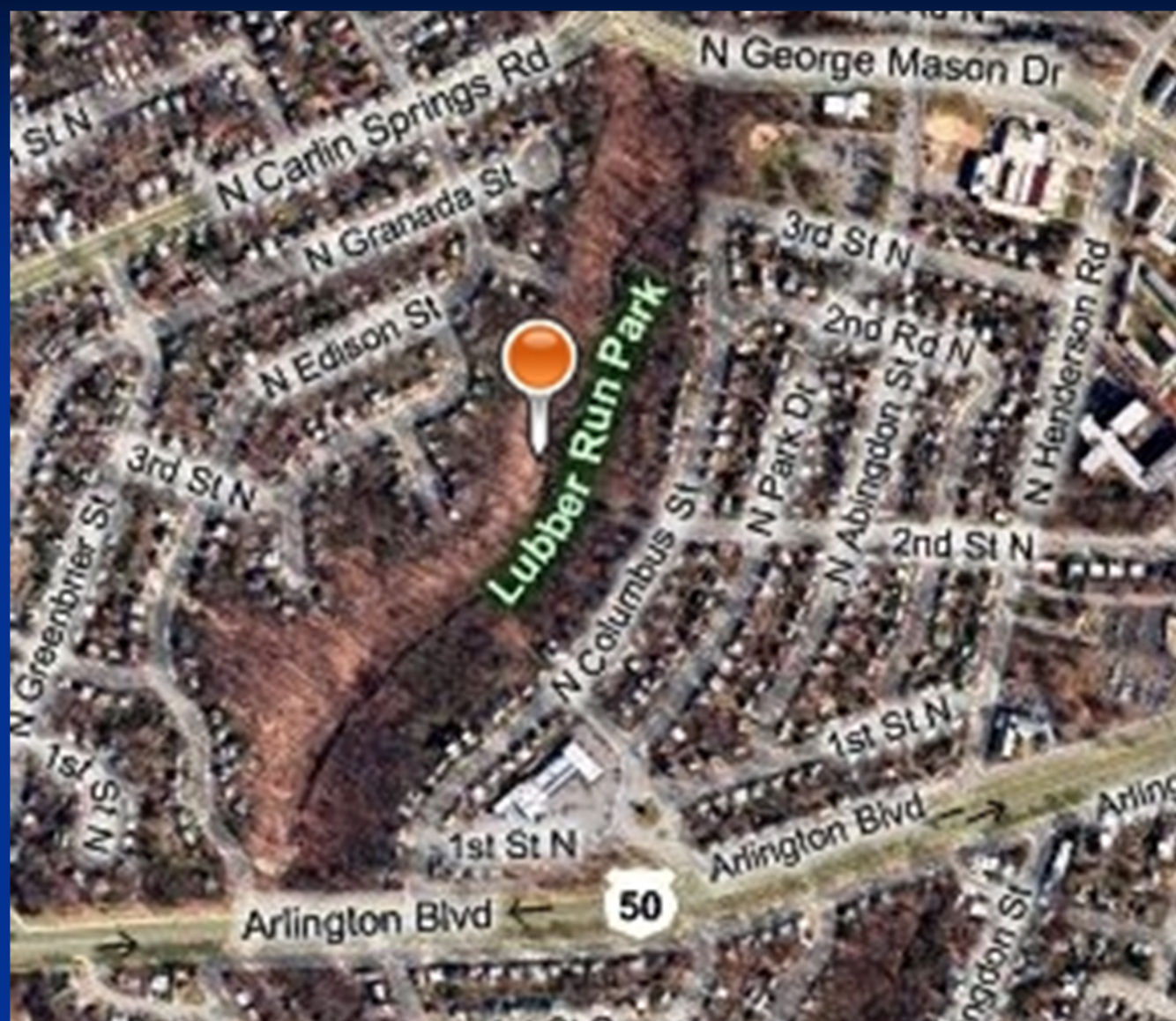
Jason Kirkpatrick

Wendy Mooring

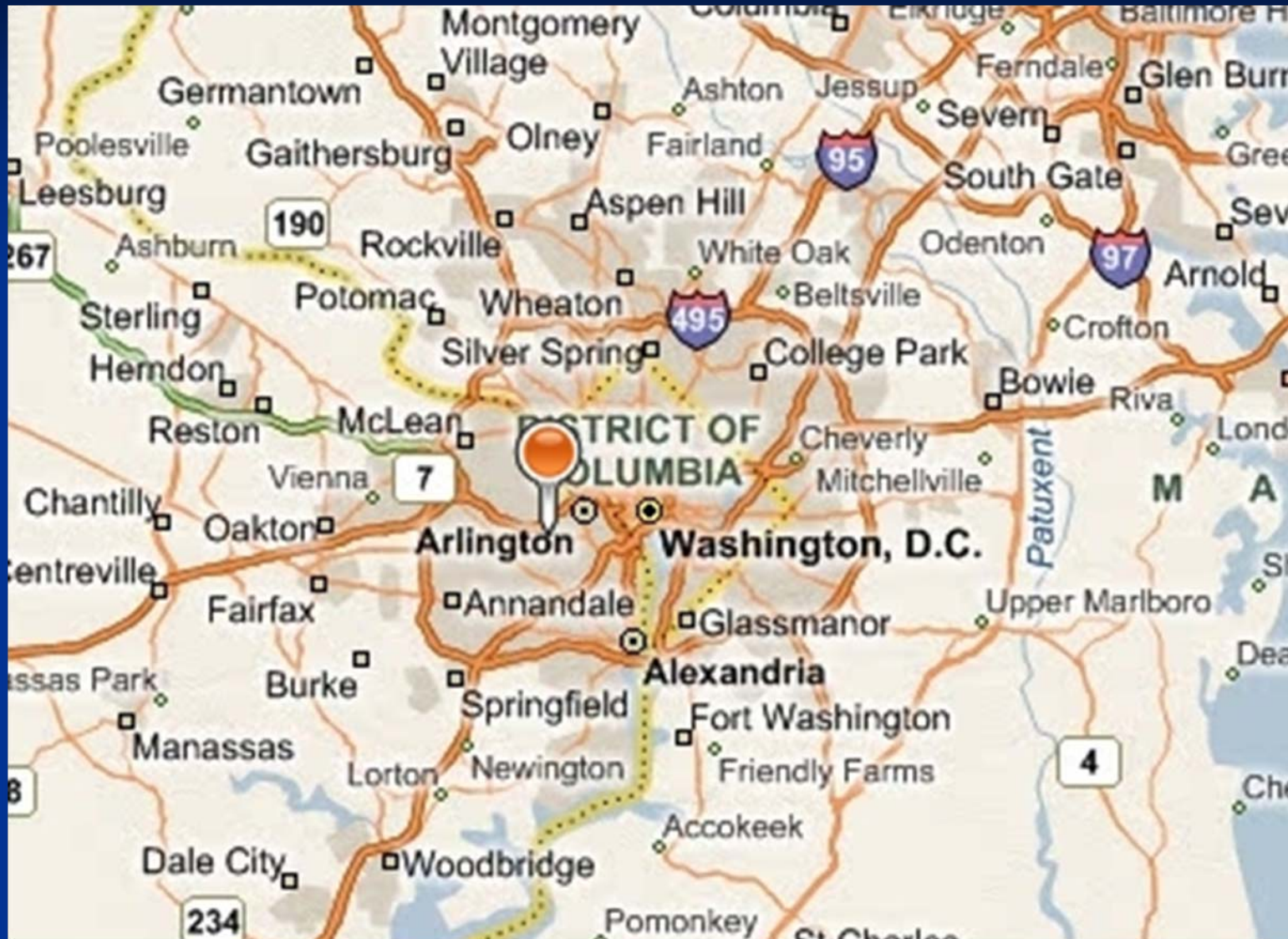
Pedro Morales

Olivia Westbrook

Randy Westbrooks



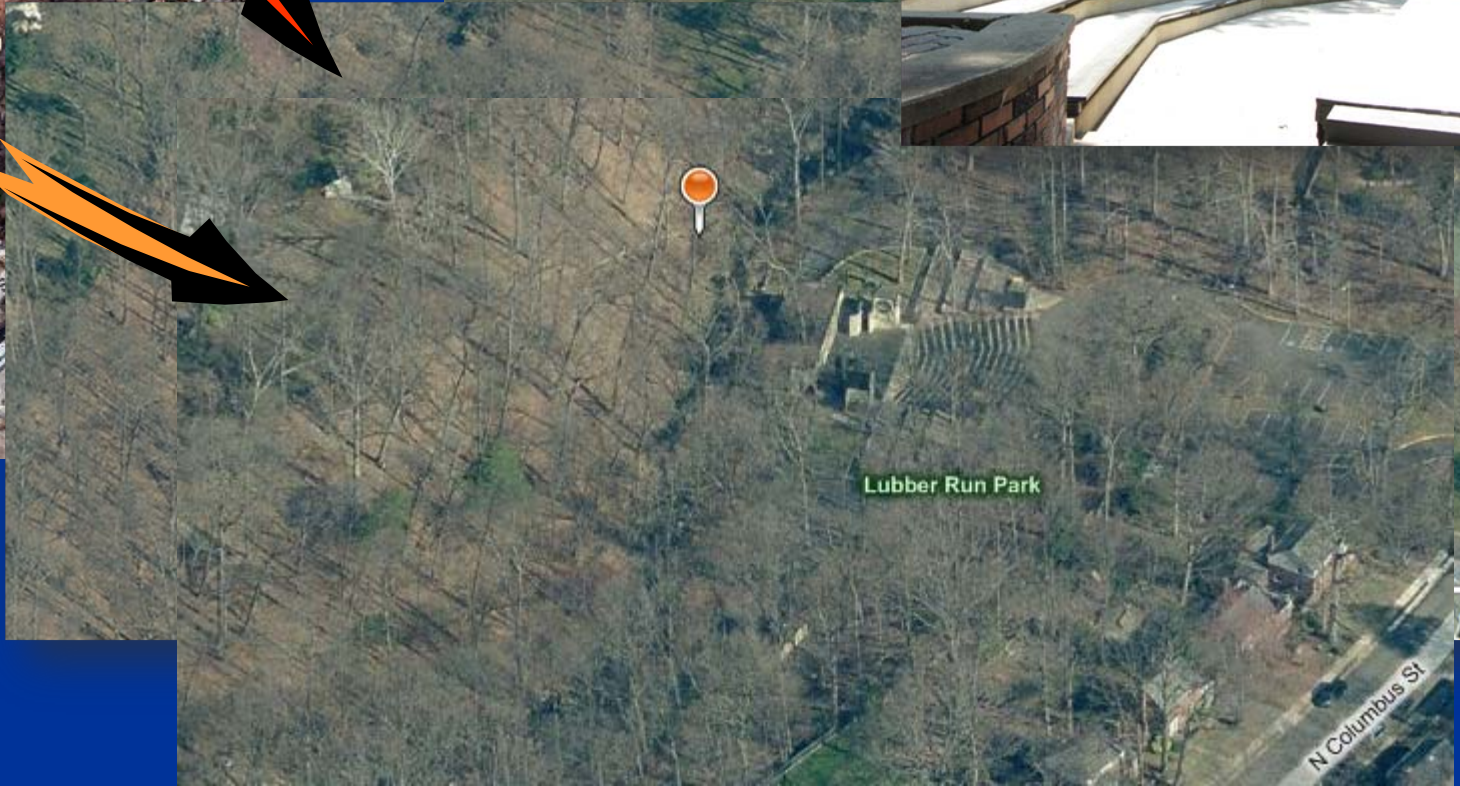
Lubber Run Park



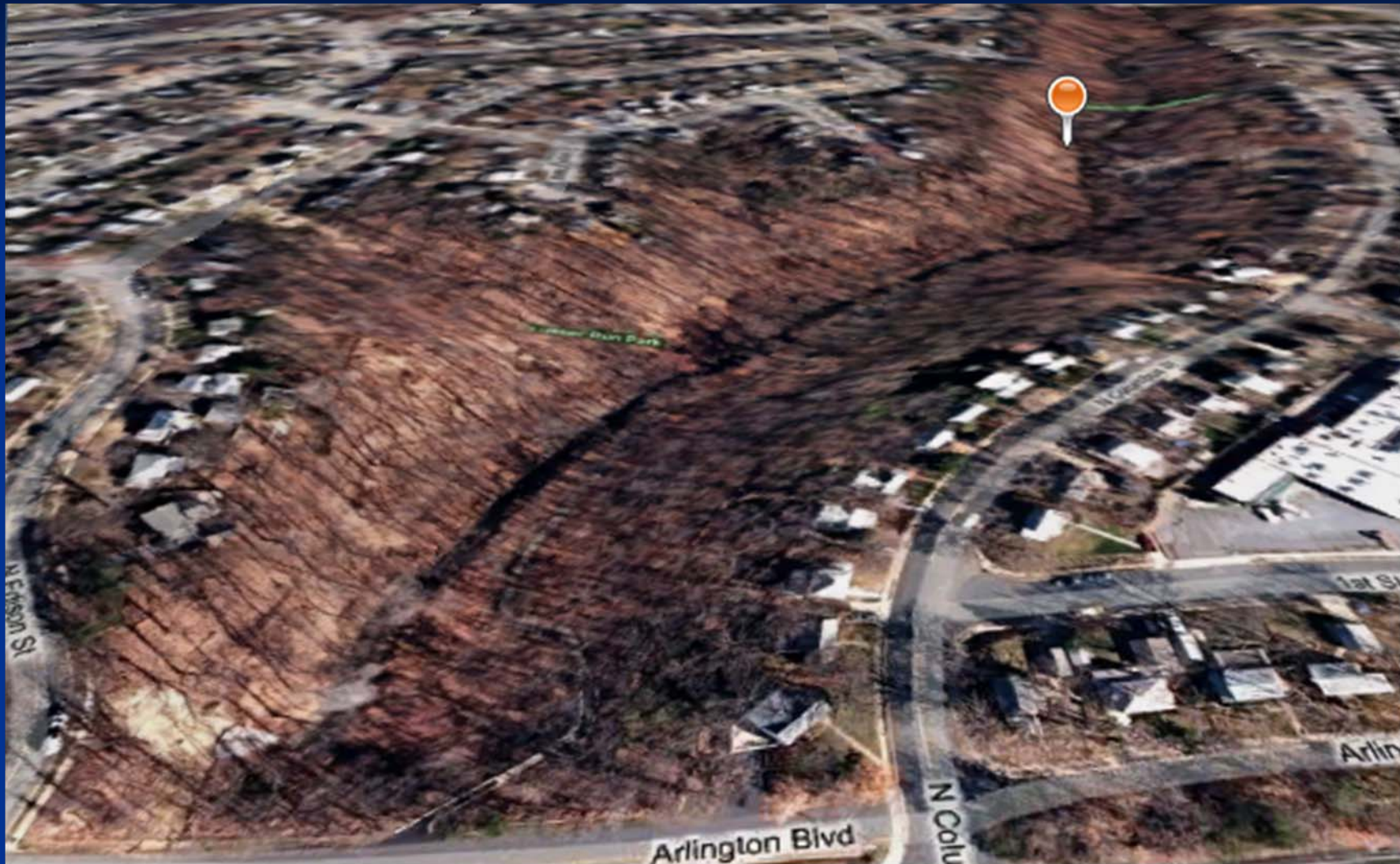
Lubber Run Park







20 m
© AND
10-2



Facts about Lubber Run Park

- Size: 22.16 Acres
- Steep Valley Carved by Lubber Run Creek
- Multi-use field 1 (open grassy area)
- Playgrounds (2)
- Gazebo
- Fire Ring in Park
- Parking Lot (30 Spaces)
- Restrooms (2)
- Stream - Paved Trail - Nature Area
- One of 30 Parks in Arlington County Parks *Remove Invasive Plants* Initiative

Q&As

- What IVS threaten the park?
- What can be done to control established IVS?
- What can be done to prevent further introductions?
- What are the ultimate goals for the park?
- What partners should be involved in the effort?
- What are their roles?
- How will the effort be supported?

LRP IVS Mgt. Plan Elements

- Prevention
- EDRR for New Species
 - Survey, Eradication
- Control for Established Species
- Outreach and Education
- Partners
- Potential Funding Sources

I. Prevention Strategies.

- Signs at Trail Entrance
- Kiosks for Pictures, Brochures and Fact Sheets
- Use of Weed Free Mulch and Soil
- Equipment Sanitation by Park Employees



II. EDRR.

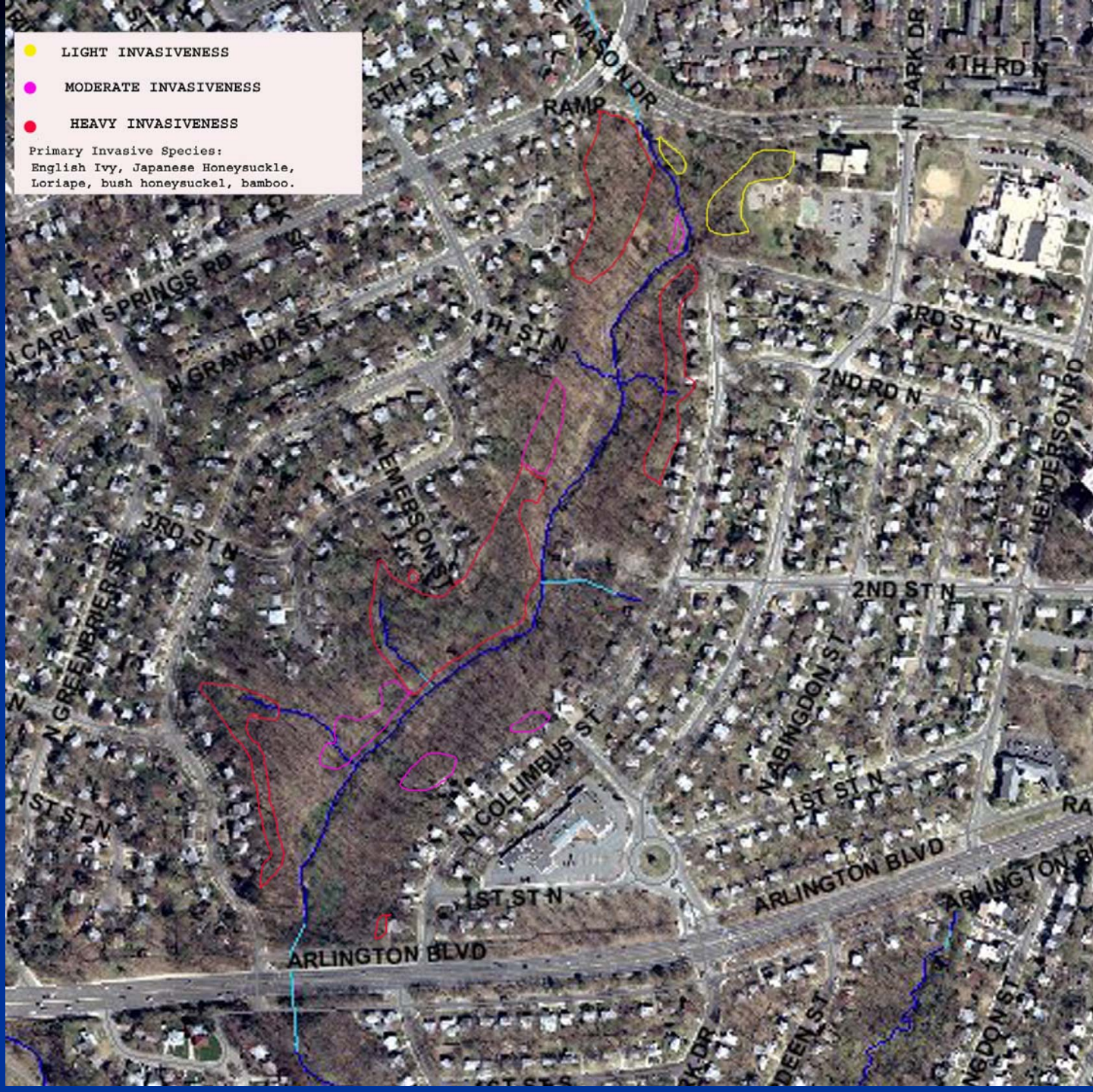
- Detection and Delimiting Surveys
- Mapping
- Eradication of Certain Species
 - Kudzu



Kudzu Coalition
Spartanburg, S.C.

- LIGHT INVASIVENESS
- MODERATE INVASIVENESS
- HEAVY INVASIVENESS

Primary Invasive Species:
English Ivy, Japanese Honeysuckle,
Loripae, bush honeysuckle, bamboo.



II. EDRR.

- English Ivy
 - Hack and Squirt



Marshall Johnson, IPC, at LRP.



III. Maintenance Control.

- Autumn Olive
- Burning Bush
- Bush Honeysuckle
- Chinese Privet
- Chinese Wisteria
- Garlic Mustard
- Japanese Barberry
- Japanese Stiltgrass
- Lesser Celandine
- Multiflora Rose
- Oriental Bittersweet



Garlic Mustard.
Image by Les Mehrhoff!

IV. Outreach and Education.

- Public Advisory Meetings
- Print and Electronic Media
 - Newspaper Articles
 - Project Website
 - Radio and TV Interviews
- Training Workshops for County Personnel
 - Equipment Sanitation; Control Methods
- Volunteer Training Workshops
- Presentations at Local Clubs, Schools

V. Partners – Friends of LRP.

■ Public Agencies

- Arlington County Parks, N. VA Community College, FWS, NPS, National Zoo, Arlington County Coop. Ext. Service, Arlington County Neighborhood Conservation Program
- 2002-2006: 170 Hours

■ NGOs

- VA Native Plant Society, Local Audubon Society Chapter, TNC, NatureServe, Local Land Conservancies, World Bank

■ Corporate Sponsors

- Home Depot, Lowers, 84 Lumber, Landscaping Companies, Chemical Companies, Outback Steakhouse

■ Local Residents

- Arlington Forest Citizens Association
 - 2002-2006: 345 Hours Contributed

VI. Long Term Goals

- Establishment of Non-profit Friends Group
- Removal of all Exotic Plants
- Restoration of Native Plants (e.g., Jack-in-the Pulpit, etc.)
- Establishment of Weed Free Zone Certification Program in the VA-DCNR
 - State and Local Funding for Certified Sites (Parks, etc.)
- Designation as a Weed Free Zone by VA-DCNR

VII. Funding Sources.

- **Arlington County Neighborhood Conservation Program**
- **Fund Raisers in the Park**
 - Plant Sales
 - Weed Walk
 - Concerts
 - Seminars
 - Outdoor Movies
 - Adopt a Native Plant in the Park
 - Trees, Shrubs, Herbs
- **Yard Weed Exchange at Corporate Partners**
- **Grants**
 - NFWF Pulling Together Initiative Challenge Grant
- **Donations to Friends of LRP**

VIII. Wavyleaf Basketgrass.

Weed Alert!



